



Type	Configuration: Spiral Wound	Membrane Polymer: Composite Polyamide	Brine Spacer Material: Polypropylene	Nominal Membrane Area: 6ft ² (0,6m ²)
------	--------------------------------	------------------------------------------	-----------------------------------------	--------------------------------------------------------------------

Specifications

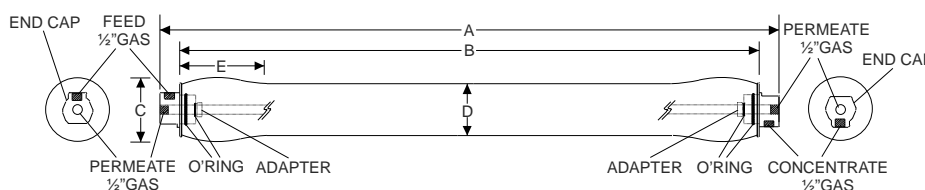
LOW1		LOW2		LOW3		LOW4	
Permeate Flow:	Salt Rejection:	Permeate Flow:	Salt Rejection:	Permeate Flow:	Salt Rejection:	Permeate Flow:	Salt Rejection:
185 gpd (0,7 m ³ /d)	99,0% nominal (98,0% minimum)	120 gpd (0,5 m ³ /d)	99,4% nominal (99,0% minimum)	200 gpd (0,76 m ³ /d)	98,5% nominal (97,0% minimum)	*150 gpd *(0,57 m ³ /d)	*99,0% nominal *(98,0% minimum)

Test Conditions

(After 30 min of operation)	Solution NaCl	Applied Pressure:	Operating Temperature:	Permeate Recovery:	pH Range:
	1500 ppm *500 ppm	150 psi (10,3 bar) *100 psi (6,9 bar)	77 °F (25 °C)	10%	6,5 ÷ 7,0

Dimensions

A Total Length	B Partial Length	C External Diameter	D Tubular Diameter	E	Weight shipped-working
16.40 inches (417 mm)	13.25 inches (337 mm)	3.17 inches (80,5 mm)	2.56 inches (65 mm)	5.1 inches (130 mm)	4.0-4.7 lbs (1,8-2,1 Kg)



Maximum Operating Limits

Operating Pressure Fibreglassed	Temperature	Pressure Drop	Feed Flow	Chlorine Concentration	Feedwater SDI (15min)	Feedwater Turbidity
180 psi (12,4 bar)	113 °F (45 °C)	10 psi (0,7 bar)	6 gpm (23 lpm)	<0,1 ppm	3,0	0,5 NTU

Other Operating Limits

Feedwater pH	Minimum ratio of concentrate to permeate flow for any element
3,0 ÷ 10,0	5:1

The limitations shown in Operating Limits are for general use. The values may be more conservative for specific projects to ensure the best performance and longest life of the membrane.

Notice: The test conditions with " * " refer to LOW4. The size must be considered in a range of $\pm 3\%$ except for the lengths (A and B) $\pm 3\%$. Minimum permeate flow for individual modules may vary 15% below nominal. The modules are sealed with small screws (to be removed when used), they contain less than 1.0% sodium meta-bisulfite and less than 10% propylene glycol solution and are then packaged in a cardboard box.

Guidelines: Permeate obtained from first hour of operation should be discarded.

Avoid static permeate-side backpressure at all times.

These membranes may be subject to drinking water application restrictions in some countries: please check the application status before use and sale.

The customer is fully responsible for the effects of incompatible chemicals on elements. The presence of free chlorine and other oxidizing agents will cause membrane failure, the damage is not covered under warranty.

Oltremare believes the information and data contained herein to be accurate and useful. The information and data are offered in good faith, but without guarantee, as conditions and methods of use of our products are beyond our control. Oltremare assumes no liability for results obtained or damages incurred through the application of the presented information and data. It is the user's responsibility to determine the appropriateness of Oltremare's products for the user's specific end uses.

No performance warranties are given; all implied warranties of merchantability or fitness for a particular purpose are expressly excluded. Consult factory for detailed warranty information.

We reserve the right to modify or amend specifications without prior notice.